



Moody Hollywood Nest Made for Entertaining

The home of designer, Kris Turnbull

Stepping into Kris Turnbull's home is like entering a living gallery – a narrative of his passion, creativity, and attention to detail. As the founder and creative force behind the prestigious Kris Turnbull Studios, he has transformed this Victorian townhouse into a story of his design philosophy: a space where history, art, and contemporary living converge.

EDITORIAL BY EMMA DEIGHAN. PHOTOGRAPHY BY PETER BRUCE.



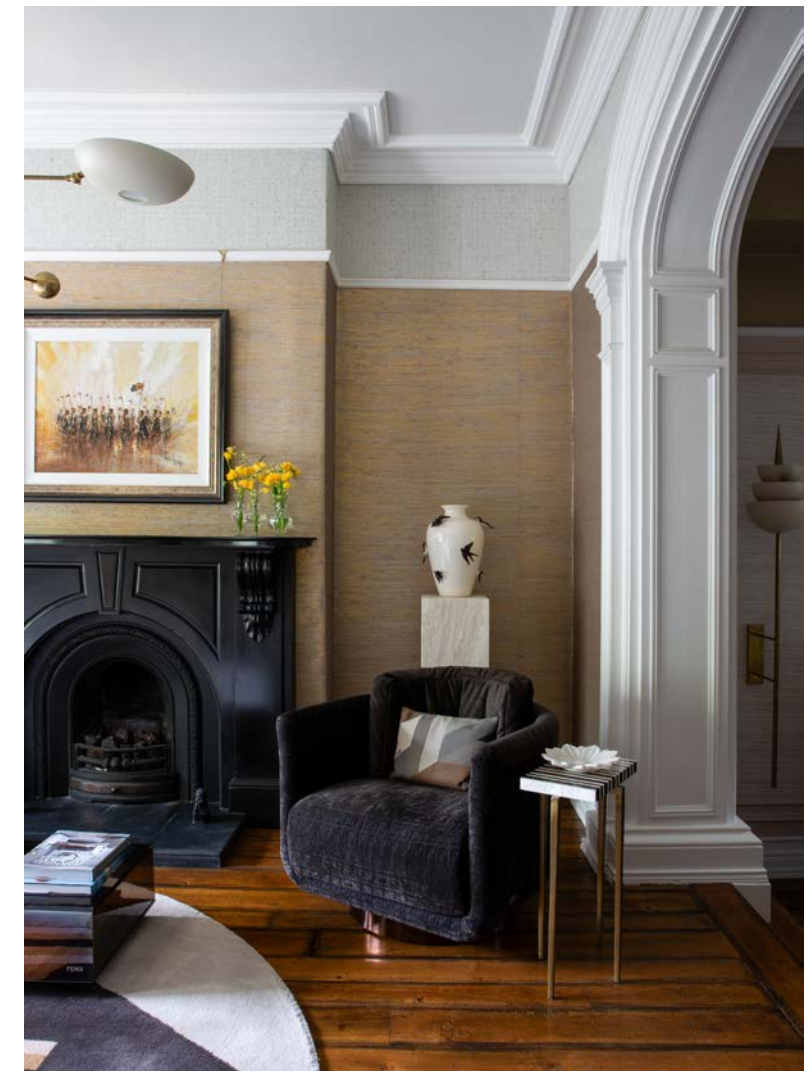
Built in 1869, this magnificent end-terrace property is rich in historical charm. 'Victorian homes come in all shapes and sizes and in an abundance of styles,' Kris Turnbull begins. 'These properties have a rich architectural history and have provided significantly more habitable accommodation for generations. The house would have originally housed professional people, with the family living from the first floor up and the maid's quarters in the back.'

Over the years, Kris and his now-husband Christophe have meticulously renovated the house, transforming it into a three-bedroom sanctuary, complete with ensuite bathrooms and dressing rooms. 'We loved the house immediately, though it was a very different house at start when we bought it. We completely renovated from top to bottom – optimising the layout for improved functionality, converting from five bedroom to three bedroom with new heating, plumbing and electrical works to ensure efficiency.'

For Kris, the home is much more than just a place to live; it's a personal visual diary. When asked if the design themes reflect the work in his studios, he continues, 'I'd say there's



‘Collaborating with our network of trusted suppliers and artisans, we’ve mixed specialist furniture pieces with antiques we’ve picked up along the way.’



an overall feel to the home that you’d find there, but it’s definitely a visual diary of my journey over the last 11 years with Christophe,’ adding that it’s generously accented by personal finds from their travels.

The interior style is an eclectic mix of period and contemporary influences. ‘I love fabrics and textiles. My grandmother was originally a hat maker for Robinson Cleaver and later became a florist, so colour doesn’t scare me. I can use neutrals, but for me, the home is about reflecting personality and our journey,’ he says. Here, he illustrates the art of blending various styles, textures, and periods to create a unique, personalised interior.

‘Collaborating with our network of trusted suppliers and artisans, we’ve mixed specialist furniture pieces with antiques we’ve picked up along the way,’ Kris continues. ‘We both love art, and the house has lots of real treasures in different forms and interest. Personally, art doesn’t have

to match and can be the direct opposite, creating contrast. Not only should colour, but size and scale, and mixing old and new be considered. I would dress and balance mid-century modern designs with traditional pieces within the same room.’

Victorian homes are known for being tall yet slim, asymmetrical buildings, says Kris, who has treated the hallway into a seamless flow throughout their house. ‘We specified a more classic and timeless natural marble for the entrance floor – Calacatta Oro, an Italian marble – cut in a mosaic format,’ he says. ‘The stone was water-jetted to give it a sharp, clean form, and I wanted a strong contrast.’ The staircase carpet, designed by Kris himself, is a geometric masterpiece. ‘It’s made from eucalyptus silk which makes soft and lucent, hypoallergenic and antibacterial,’ Kris adds.

The main drawing room on the first floor is the heart





of the home, where Kris and Christophe entertain guests and host soirées. ‘This room was designed to feel more like a gallery,’ Kris says. Every piece, from the furniture to the artwork, makes a decorative statement. ‘The furniture is all customised, with collaborations from various manufacturers throughout Portugal and Spain. The set of coffee tables by a French design house is crafted with white crystal marquetry top with gilded seagrass feet and brushed brass edges, it will be an antique soon enough.’ The room’s focal point is a large art work by Belgian surrealist artist Pol Mara “That was my starting piece – the colour scheme came from that painting,” Kris reveals. The room’s lighting, designed in-house at Kris Turnbull

Studios, adds to the ambiance, with chandeliers casting a golden glow in the evenings.

On the ground floor, the additional sitting room offers a cosy retreat. ‘This is our chill-out space, where we have pizza on Fridays and watch movies,’ Kris says. The room’s design is centred around comfort, with a curvaceous Fendi Casa sofa and swivel chairs, curtains and blinds in Pierre Frey fabric. ‘Their fabrics are unique and special,’ Kris says. The room is a blend of contemporary and classical elements, with pelmets, for example, adding a touch of tradition. The colours in the Roman blinds tie the room together.

Dubbed the ‘chill-out’ space, the sitting room is full of



pictures, allowing many personal memories to take centre stage while a smart dining room leads into the wow-factor kitchen.

Once a small, poky space with an outdoor yard, the kitchen has been transformed into a dark and moody social hub. 'The kitchen was the biggest challenge,' Kris admits. 'But it's the place where everyone always ends up, where you party around the island.' The space is now a blend of smoked oak, Huntsman green, and quartzite worktops. 'We wanted dark and moody to reflect the darker side of the house,' he explains. 'Everyone thought we were crazy going dark, but that's its success.'

The former courtyard is now a social area, flaunting bold, tropical-themed Philip Jeffries wall coverings. 'We knocked windows through to bring more light into the

kitchen.' That light bounces off the Lamont Stone water-jetted worktops, while the floor tiles, in three different finishes – matt, honed, and polished—are something of a talking point. 'That irregularity in the tiles gives a lovely highlight. It's a simple and subtle move,' Kris adds.

The main bedroom is a serene sanctuary. The design here is inspired by nature. 'This used to be three rooms, but we converted it into a space reflective of modern lifestyle with a walk-in dressing room, ensuite, and separate bathroom,' Kris explains. The room's design is centred around nature, with natural and organic materials throughout. The curtains, from Armani Casa, are in a serpentine green colour. The bedside table, crafted by a jewellery designer, Koket, in Portugal, features intricate details inspired by bugs, animals, and plants. 'There's a

nod to nature in every detail,' Kris notes.

The bed, by Fendi Casa, is dressed with beautiful, hand-finished cushions in natural linens with leather buckle details by de Le Cuona. 'It's got something very earthy and natural,' Kris says. The walk-in wardrobe leads into the bathroom, which 'gives a real sense of arrival' with its gold detailing. 'It's a masculine space too, and that's what we wanted.'

On the third floor, the twin bedroom is a dreamy retreat for guests. The complete ceiling and all walls have been decorated in a cloud wallpaper, a collaboration between Italian design house Fornasetti and British heritage wallpaper experts Cole & Son. 'It creates a whimsical atmosphere, making guests feel as though they are sleeping in the clouds. It definitely makes a statement and

does impress our guests each time,' Kris says.

The main bathroom blends traditional Victorian elements with modern design. 'We played on the traditional with the Victorian bath, a proper steel bath,' Kris explains. The room features a marble floor which has been arranged in a herringbone pattern. The Gessi sanitary ware and traditional sink from Lefroy Brooks add a touch of timeless elegance to the space.

Installing the cast iron bath wasn't too easy, Kris continues. 'We had to put additional steel beams to support the weight of the steel bath and the bath water. Trust me, no one needs to worry anymore about falling through the ceiling when having a bath!'

An office, once the maid's quarters, has been transformed into a creative workspace. 'Nicholl Plaster



Mouldings refurbished and recreated all the period mouldings and ceiling roses,' Kris says. Embracing the high ceiling, the specialists worked throughout the home to restore detailed plasterwork of the period home.

He adds that the office's design is a reflection of the home's overall aesthetic, with rosewood herringbone floors and embroidered satin cloth fabric adding a touch of opulence. 'I wanted to reflect all the colours from the other rooms and bring them into the Pierre Frey fabric in the study,' Kris explains.

This stunning property is now on the market, offering another family the chance to enjoy its period drama married with prestigious design elements. However, departing will be an emotional journey for Kris and Christophe. 'It's been more than 10 beautiful years of creating this house, it's been a very exciting journey though I'll be very sad saying goodbye.'

The home, filled with joy, social gatherings, and countless memories, is a chapter in their life together. As they prepare to move on to their next project – a stunning Georgian property renovation not too far from this one, which they're gutting and redesigning in their style – Kris reflects on the journey. 'We've had the best times here, a home full of joy and great social people.' 🏠



*If you have any questions or queries relating to this reader's home please contact Heather Withers.
Phone +44 (0) 28 9147 3979 or email enquiries@ihil.net*